

Fast | Precise | Visual | Simple | Safe



Petrostar-300

MWDXRF Sulfur Analyzer

Simultaneous ultralow Sulfur and Chlorine analysis according to ASTM D7039 and ASTM D7536 for the mobile lab and analysis center.



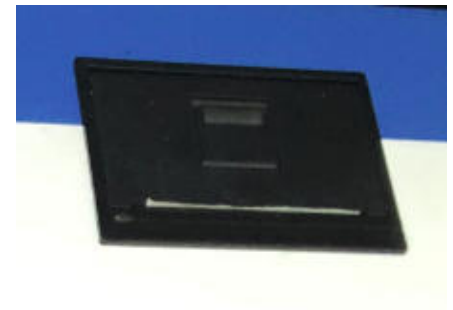
Down to sub-ppm within 200sec

Simultaneous Analysis of S,Cl

Handcarry Compact Design



Reusable Sample Cup



Embedded Printer



Touch to Measure and Print



Petrostar-300

MWDXRF Sulfur Analyzer



Plug-It-In & Measure. Results with One Touch. Unrivaled Precision.

The Petrostar is a compact design and portable trace element analyzer and provides reliable quality results from ultra low sulfur and chlorine detection (ULSD) and gasoline to marine fuels and crude oil. The analyzer is suitable for operating in-the-field,

on-board marine environments and in laboratories. The analyzer uses Patent DCC (double curved crystal) and latest SDD detector which offers extra-ordinary precision and reproducibility on Sulfur, Chlorine etc

.Analysis on demand, when and where you need it.

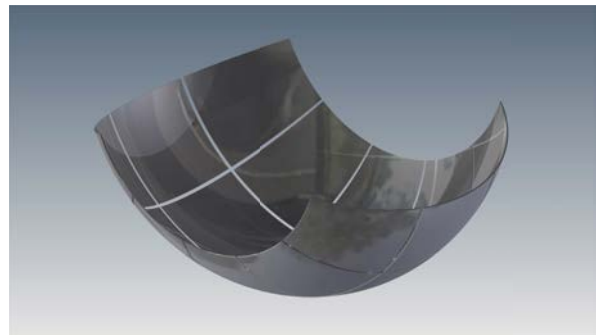
Application

- Total sulfur analysis for gasoline, diesel, kerosene, biodiesel, and crude oil
- For refinery labs, terminal pipelines, onboard analysis
- Addictive plants, testing vans, and inspection labs



Performance advantages

- Compact design. all instruments are packed in one handcarry case.
- Fits on any bench and compatible for use in mobile labs/vans.
- No need complicated sample preparation
- Unrivaled accuracy and precision in a 200 sec.
- Can be powered on built-in battery, or 100-120V AC and 200-240V AC
- No gasses needed, no critical operating conditions
- One calibration curve will run both diesel and gasoline and bio-diesel
- 10 inch full touch screen for analysis and print
- Robust polyamide windows for easy cleaning.
- Dual protection for the detector window.
- Extremely low maintenance: No conversion gasses, heating elements, quartz tubes or columns.

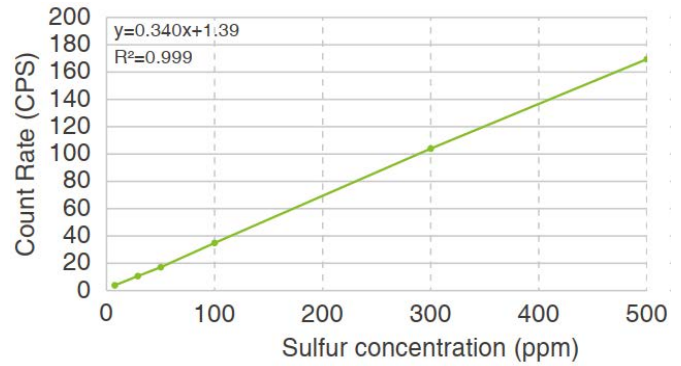


Ultra large double curved crystal (ULDCC)

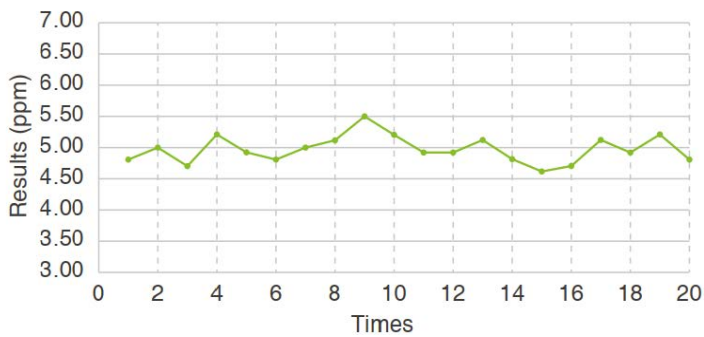


Technical Parameters :

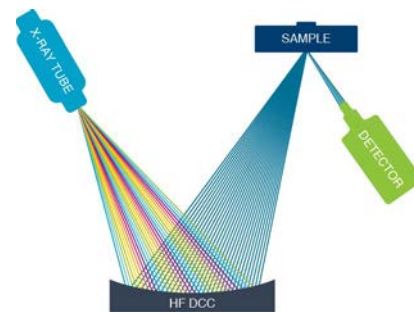
Analyzed Element: S, Cl, Al, Si
 Analysis Range: LOD - 10%
 Limit of Detection: Sulfur 0.4 ppm, Chlorine:0.3 ppm(200S)
 Function: Special for petroleum element analysis
 Integrated PC: 10" Touch screen
 Analytical Precision: 10ppm, the precision can be controlled to <10%
 Measuring Time: 50- 200S
 Sample Volumn: 1ml
 Working Voltage: AC110V/220V
 Working Temperature: 10-35°C
 Dimension: 41cm(L)*32cm(W)*16cm(H)
 Weight: 9kg



Calibration result Intensity VS Content



5ppm samples 20 times repeat tests





ANASPEC
Scientific Instruments

Delicated to high quality instruments

We Serve Science



Anaspec Instrument Inc.

Add:Oxford House, Oxford Street

Newbury, Berkshire RG14 1Jb. UK

Website: www.anaspec-instrument.com

Email: sales@anaspec-instrument.com

Test data in this manual, if not noted, is our company's test data.

All information in this manual is for reference only, which is subject to any change without notice.